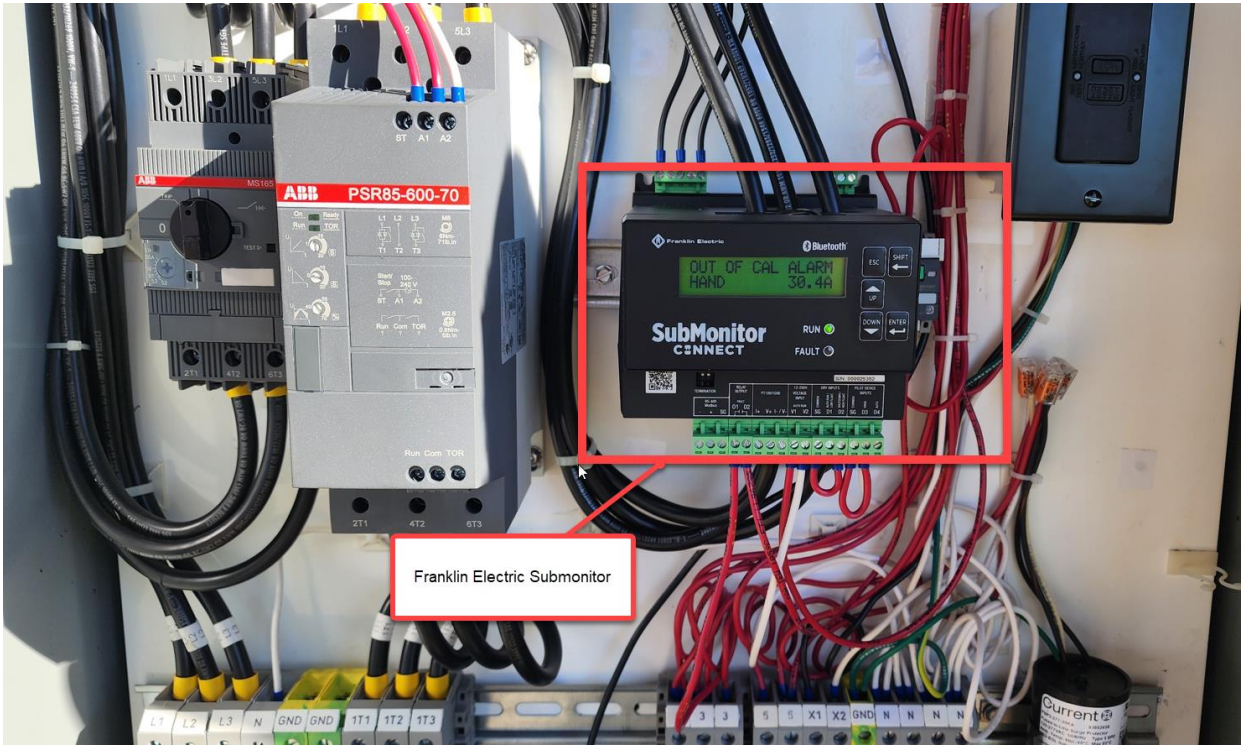


Locating Panel and Submonitor Serial Numbers

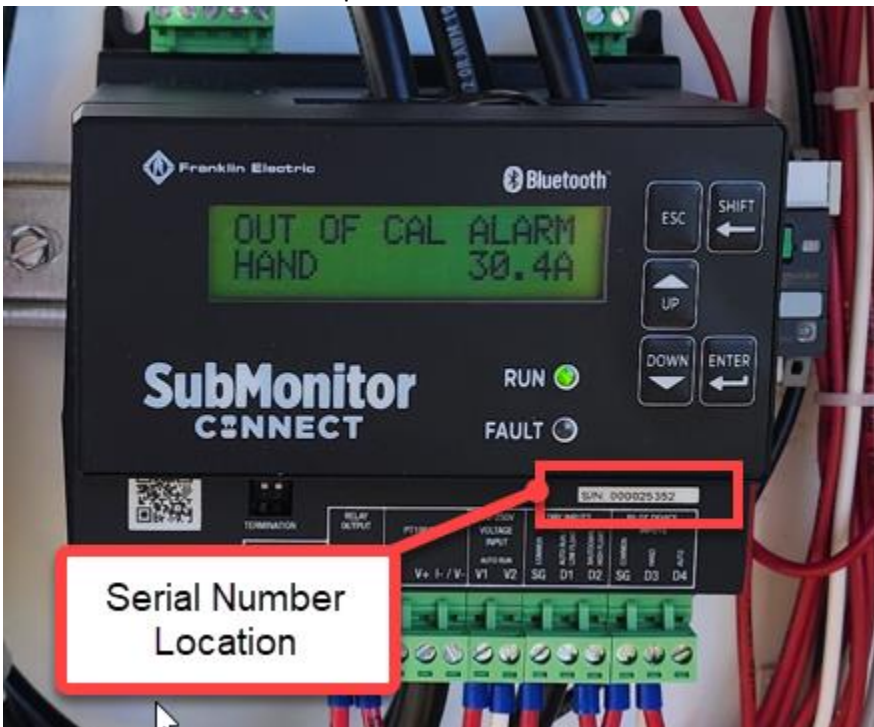
1. Open the enclosure to expose the control panel.
2. The UL label with the panel serial numbers is located in the lower left corner of the on the inside of the enclosure door. See Picture below:



3. Locate the submonitor on the panel. It is clearly labeled “Submonitor”. See picture below:




4. Once the submonitor has been located on the lower right portion of the submonitor frame, the serial number is located See pictures below.



SubMonitor CONNECT

RUN 

FAULT 

DOWN

ENTER



S/N: 000025352

Serial Number Location

RELAY OUTPUT	12-250V	DRY CONTACTS	PILOT DEVICE INPUTS
COMMON		COMMON	COMMON
AUTO RUN / LOW FLOAT		AUTO RUN / LOW FLOAT	HAND
SHUTDOWN / HIGH FLOAT		SHUTDOWN / HIGH FLOAT	AUTO
2 SG		D1 D2	SG D3 D4